

## MATERIAL

Cast AISI CF-8 stainless steel, sandblasted matte finish.  
AISI 304 stainless steel screws and washers.  
AISI 304 zinc-plated steel nuts.

## STANDARD EXECUTIONS

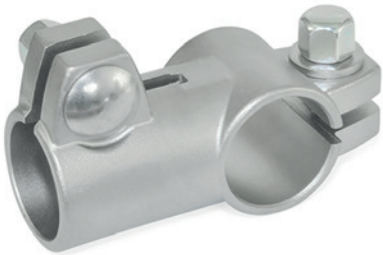
- **GN 192.5-A**: without sealing washers.
- **GN 192.5-B**: with acetal resin based (POM) technopolymer sealing washers and silicone closing ring.

## FEATURES AND APPLICATIONS

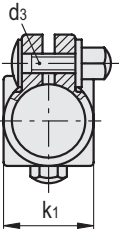
GN 192.5 connecting clamps are shaped so as to provide an optimum clamping with tubes GN 990 (see page 1368).

The particular shape of the screws and nuts prevents the formation of condensation.

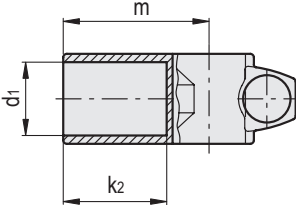
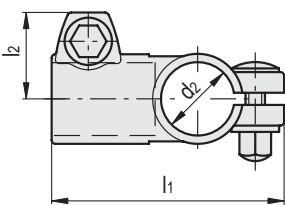
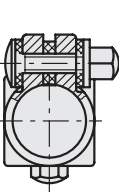
In GN 192.5-B execution, the presence of technopolymer sealing washers and silicone ring allows the sealing of the holes and threads making them waterproof.



GN 192.5-A



GN 192.5-B



## GN 192.5-A

Code	Description	d1	d2	d3	k1	k2	l1	l2	m	⚖
GN.52791	GN 192.5-B30-B30-A-4	30	30	M8	37	42	96	35	60	320
GN.52795	GN 192.5-B50-B50-A-4	50	50	M10	65	75	151.5	48.5	103	350

## GN 192.5-B

Code	Description	d1	d2	d3	k1	k2	l1	l2	m	⚖
GN.52792	GN 192.5-B30-B30-B-4	30	30	M8	37	42	96	35	60	320
GN.52796	GN 192.5-B50-B50-B-4	50	50	M10	65	75	151.5	48.5	103	350